

SOLUTION OVERVIEW	
Client	South African Police Service
Industry	South African Police Service
Solution Type	Business Intelligence
Technologies	SharePoint 2010, SQL 2012, Performance Point, Reporting Services, PowerView, PowerPivot, Analysis Services OLAP, Analysis Services Tabular, SQL Server Integration Services
Completion Date	2013-08-15

1. The Client

The Integrated Justice System (IJS) Program is responsible for the integration of the various business and system processes that make up the criminal justice system, thereby enabling the South African Government's Justice, Crime Prevention and Security Cluster Departments to deliver effective and efficient criminal justice to the citizen.

2. The Problem

The sharing of information between the Justice, Crime Prevention and Security (JCPS) Cluster departments have to be improved, to reduce administrative delays which will enable the various justice service providers to respond efficiently and provide them with the tools for effective management and planning of the criminal justice system.

3. The Solution

An important component to the sharing of information is the provisioning of a Business Intelligence system, which will answer certain predefined KPI's which in turn will assist with the process of better and more effective management and planning.

The IJS Business Intelligence Solution, sources data from the messaging hub through which information between departments flows and uses this information to populate data on which the KPI's defined for the effective management of the departments is based.

CONTACT US

Tel: 011 807 9575

E-Mail: info@isolve.co.za

Web: www.isolve.co.za

Find us on:



To us, **DELIVERY** is everything!

Microsoft Partner

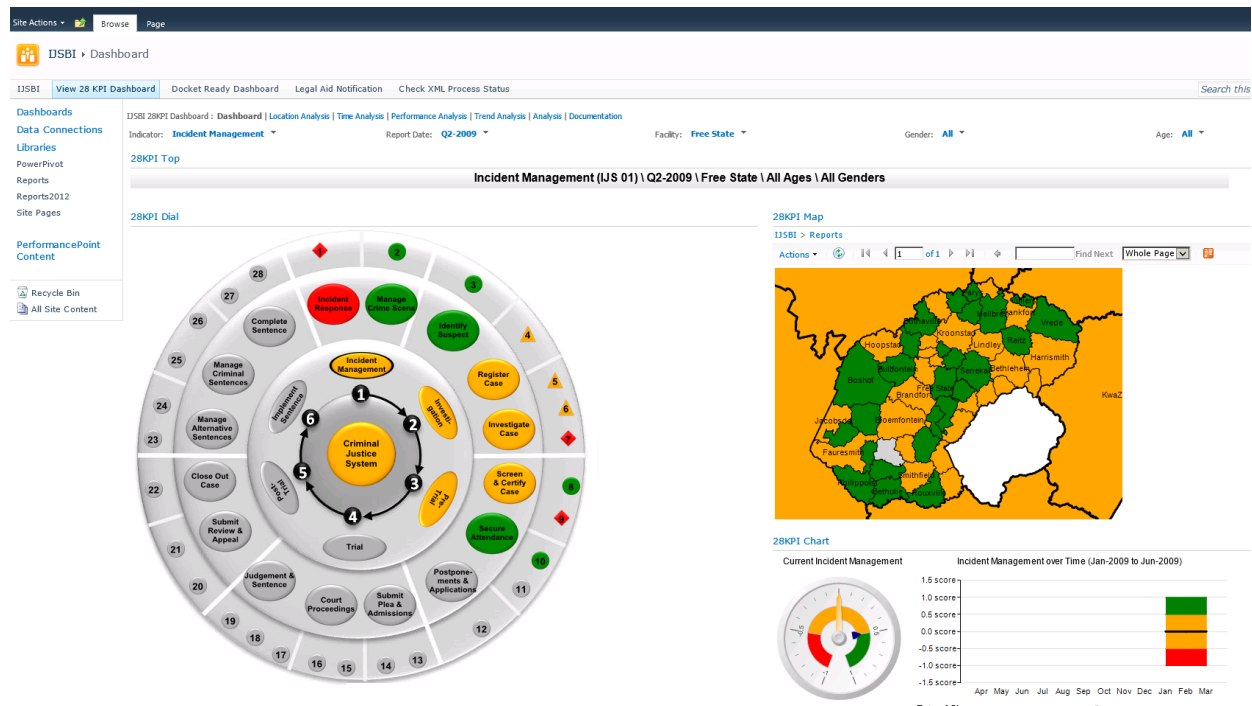
Gold Business Intelligence
Gold Data Platform
Gold Learning
Gold Portals and Collaboration

4. The Technology

The data is sourced in real time from the messaging hub (Microsoft BizTalk server), using SQL Server Integration Services.

From there the data is stored in a SQL Server 2012 Database. The data is aggregated in both a SQL Server Analysis Services OLAP Cube (for presentation of the KPI related data) and a SQL Server Tabular Cube (for presentation of the messaging related data).

The presentation layer of the solution is based on SharePoint 2010 technology, using Performance Point, Reporting Services, PowerView, PowerPivot and Excel Services.



CONTACT US

Tel: 011 807 9575

E-Mail: info@isolve.co.za

Web: www.isolve.co.za

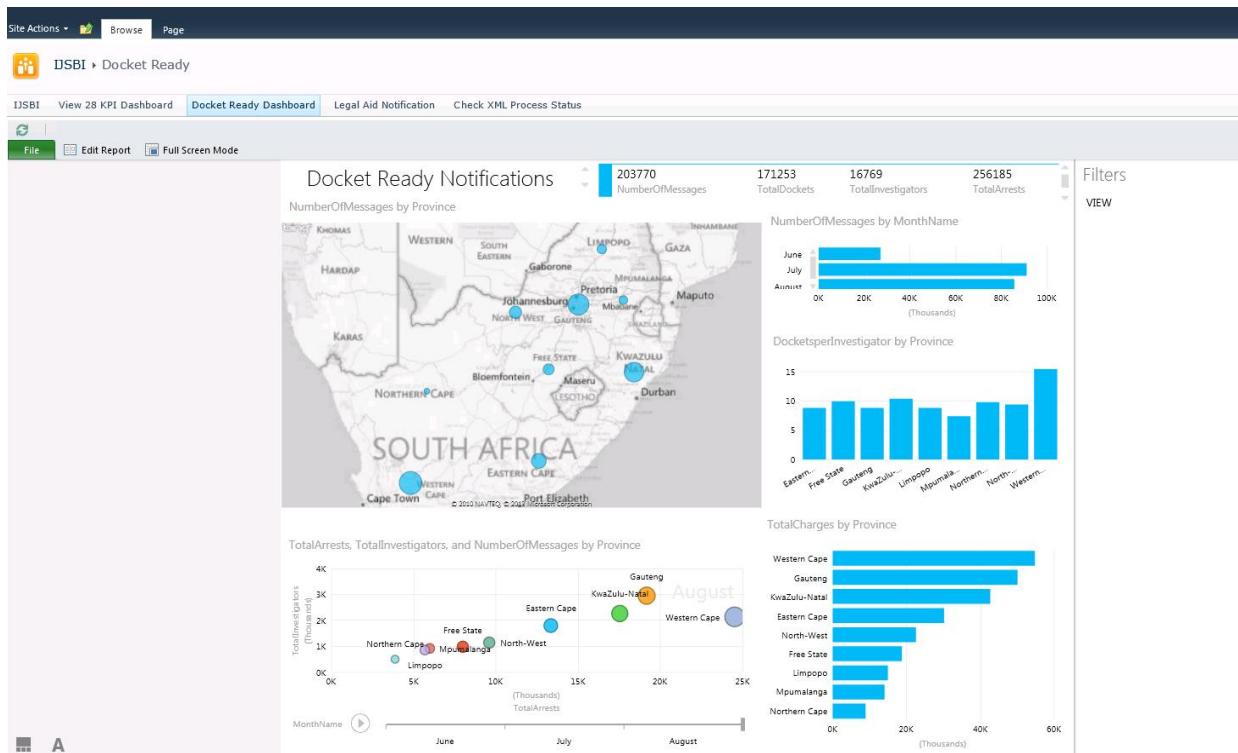
Find us on:



To us, **DELIVERY** is everything!

Microsoft Partner

Gold Business Intelligence
Gold Data Platform
Gold Learning
Gold Portals and Collaboration



5. The Benefits

The solution provides near real time information to support the predefined KPI's of the JCPS cluster of departments. Which in turn allows for the more effective management and planning of department resources and activities.

Users can analyse the base data of each KPI, over time and by location, gaining meaningful insight into trends as they occur, which in turn support more effective decision making.

CONTACT US

Tel: 011 807 9575

E-Mail: info@isolve.co.za

Web: www.isolve.co.za

Find us on:



To us, **DELIVERY** is everything!

Microsoft Partner

Gold Business Intelligence
Gold Data Platform
Gold Learning
Gold Portals and Collaboration